



Schwarzkopf
PROFESSIONAL

EXFOLIATE AND RESTORE

The Schwarzkopf Professional exclusive 2 step restorative in-salon service for optimal shine and strength

BC
BONACURE

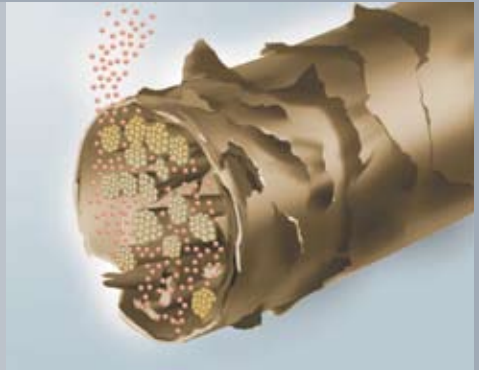
hairtherapy

Together. A passion for hair

STEP 1: exfoliate

BC Repair Rescue Enzyme Extract Treatment, the first step to repair weakened and damaged hair structures, resulting in the ultimate strengthening and elasticity restoring effect for healthy, smooth and shiny hair full of long-lasting beauty.

STEP 1 provides a gentle, exfoliating pre-treatment to remove damaged cuticle fragments from the hair structure to improve smoothness and shine of the hair surface.



BENEFITS:

- Micro beads exfoliate damaged cuticle fragments on the hair
- Papaya Extract removes damaged and dead proteins, refines the hair's structure and provides long-lasting results and shine
- Amino Acid penetrates deeply and repairs the inner hair structure
- Creates the perfect base for Step 2: Repair Rescue Collagen Therapy
- pH 3.5
- Care level 5

APPLICATION:

First cleanse the hair with any **Bonacure Hairtherapy Shampoo**. Then apply 5 to 6 pumps of the **Bonacure Repair Rescue Enzyme Extract** evenly onto towel-dried hair, massage and then comb through. Allow it to penetrate for 5 to 10 minutes then rinse well.

STEP 2: **restore**

BC Repair Rescue Collagen Therapy, the second step to repair weakened and damaged hair structures, resulting in the ultimate strengthening and elasticity restoring effect for strong, resilient and shiny hair full of long-lasting beauty.

STEP 2 reinforces the hair structure, restores the natural elasticity and strengthens damaged hair resulting in optimal condition.



BENEFITS:

- Micro Proteins penetrate and repair deep inside the hair structure
- Liquid Collagen Complex reinforces the hair structure and restores the hair's natural elasticity
- Amino Acid penetrates deeply and repairs the inner hair structure
- CuraTec Protein restructures and strengthens the inner hair structure
- Creates extra shine
- pH 3.5
- Care level 5

APPLICATION:

First, pre-treat with step 1 then apply 5 to 6 pumps of the **Bonacure Repair Rescue Collagen Therapy** evenly onto towel-dried hair, massage and then comb through. Allow it to penetrate for 5 to 10 minutes then rinse well.

This “in-salon restorative service” is not recommended to be used daily. The amazing rejuvenating result of our exfoliate and restore service should be maintained at home with the wide variety that the BC Hairtherapy range offers.

BC
BONACURE

hairtherapy